



AVENGER
160 STREET
BS VI



THE WORLD'S
FAVOURITE
INDIAN

Owner's Manual



To keep your bike in perfect running condition, please follow the periodic maintenance services which includes **3 Free and subsequent Paid services**, as per the schedule contained in this booklet.

अपनी बाइक को सही चलती हालत में रखने के लिए, कृपया आवधिक रखरखाव सेवाओं का पालन करें जिसमें **3 निःशुल्क और बाद में भुगतान सेवाएं शामिल हैं**, इस पुस्तिका में दिए गए अनुसूची के प्रति।

आपली बाईक परिपूर्ण स्थितीत चालू ठेवण्यासाठी कृपया या बुकलेटमध्ये दिलेल्या शेड्यूलनुसार पीरिऑडिक मेन्टेनन्स सर्विसेचे अनुकरण करा. **यात 3 फ्री आणि त्यानंतरच्या पेड सर्विसेस समाविष्ट आहेत.**

ನಿಮ್ಮ ಬೈಕ್ ಸಂಪೂರ್ಣ ಚಾಲನಾ ಸ್ಥಿತಿಯಲ್ಲಿರಿಸಲು, ದಯವಿಟ್ಟು ಈ ಶೆಡ್ಯೂಲ್‌ನಲ್ಲಿ ನಮೂದಿಸಲಾದ ಶೆಡ್ಯೂಲ್ ನಂತೆ ನಿಯತಕಾಲಿಕ ನಿರ್ವಹಣಾ ಸೇವೆಗಳನ್ನು ಅನುಸರಿಸಿ. ಇವು 3 ಉಚಿತ ಮತ್ತು ನಂತರ ಪಾವತಿ ಸೇವೆಗಳನ್ನು ಒಳಗೊಂಡಿರುತ್ತವೆ.

உங்களுடைய பைக்கை மிக நன்றாக ஓடும் நிலையில் வைத்திருப்பதற்கு, இந்நுதக் கையேட்டில் கொடுக்கப்பட்ட அட்டவணையில் உள்ளவாறு 3, லவச மற்றும் தொடர்ச்சியான கட்டண சேவைகளை உள்ளடக்கிய காலமுறை பராமரிப்பு சேவைகளை தயவு செய்து பின்பற்றவும்.

میں اپنے چکرٹی رننیو کڈمنڈے لے کونڈالونڈے بک لٹو کسٹو پڈوٹو پڑکارون کڈون ٹوڈوڈونڈو مویونڈینسٹو سٹوڈو ڈیونڈونڈو، "ایڈوٹو" **3 کڈوٹ سٹوڈوڈو، 3 ٹوڈوٹو مویونڈ سٹوڈوڈو کڈوڈوڈو.**

നിങ്ങളുടെ ബൈക്ക് തികഞ്ഞ റണ്ണിംഗ് കണ്ടീഷനിൽ സംരക്ഷിക്കാൻ 3 സൗജന്യവും തുടർന്ന് പണം നൽകിയുള്ളതുമായ മെയ്ന്റനൻസ് സർവീസുകളുടെയവധായി സമയാനുസൃതം ഈ ബുക്കറ്റിലെ ക്രമപട്ടികയിൽ കാണിച്ചുപ്രകാരം പാലിക്കുക.

आपना बायक बायक निरुलभावे चालू अवस्था राखार जना, निर्दिष्ट समय अखर रक्षण/वर्षण परिषेवा अनुसरण करण यास भाषा आखे 3 टि विनामूलो एवम परवती मूलभितिक परिषेवा, एहे मुखिकार अखुडुत ताकिका अनुयायी।

ଆପଣଙ୍କର ବାଇକକୁ ଉପଯୁକ୍ତ ରନିଂ ଅବସ୍ଥାରେ ରଖିବା ପାଇଁ ପିରିଡ଼ିକ୍ ମେନ୍ଟେନାନ୍ସ ସର୍ଭିସ୍‌ର ଅନୁସରଣ କରନ୍ତୁ । ସର୍ଭିସ୍‌ରେ ଅନ୍ତର୍ଭୁକ୍ତ ରହିଛି 3 ଟି ମାଗଣା ଓ ପରେରଫି ପେର୍‌ ସର୍ଭିସ୍‌ । ସର୍ଭିସ୍‌ ସାହାଯ୍ୟ ସ୍ୱରୂପ ଏହି ବୁକ୍‌ଲେଟ୍‌ରେ ପ୍ରଦାନ କରାଯାଇଛି ।

તમારી બાયકને સંપૂર્ણ ચાલુ સ્થિતિમાં રાખવા માટે, કૃપા કરી નીચે મુજબ સમયાંતરની જાળવણી સર્વિસનું પાલન કરો જેમાં **3 મફત અને પછી ચૂકવણી સર્વિસનો સમાવેશ થાય છે**, આ પુસ્તિકામાં સમાવિષ્ટ સમયક્રમ મુજબ

આપਣી ઘણીક ટું ચલડી ઘાલડ વિંચ રપટ લડી , વિઠપા આલરડી-સંઝાલ સેવા ડા પાલન કરે જિસ વિંચ **3 મુફટ અટે ઘાલ વિંચ ટુગલડન સેલ્લ ઘાલ ઘન**, ઈસ વિઝાઘ વિંચ ડિંડે ગટે અનુસુડી દે પુડિઝ।

આપોનાં બાયકન સઠિકઝારે ડાનિ થકા સ્થિતિઝ બાયવિલન, અનુગ્રહ કરિ નિઝમીઝા ટઝારઘાન સેવા અનુસઘ કરિવ ય'ત અઝઝુલ થાકે **3 ટી વિનામૂલીઝા આક ઝાંબ પિહ્વ પવિસોઘ કરવા સેવા**, એઈ પુઝિકાયનત અઝઝુલ અનુસૂડી અનુસડિ ।

اپنی بائیک کو بہترین رنگ حالت میں رکھنے کے لیے، برائے مہربانی وقت سے وقت میںٹیننس کی خدمات پر عمل کریں جس میں شامل ہیں: اس کتابچہ میں دئے گئے وقت کے مطابق 3 مفت سروسز اور بعد کی پیڈ سروسز۔

Foreword



Dear Customer,

Congratulations on becoming the proud owner of a **"Avenger 160 Street BS VI"** motorcycle, one of the finest motorcycles in the country.

Your safety and the safety of others is extremely important. Hence, before you ride the bike, please read this Owner's Manual carefully and familiarize yourself with the operating mechanism, controls and maintenance requirements. This will ensure you a long and trouble free ownership experience.

To keep your bike in perfect running condition and ensure consistent performance, we have specially programmed the periodic maintenance services which includes 3 Free and subsequent Paid services.

We earnestly advise you to avail all these services at any of our Vehicle Dealers or Authorised Service Dealers (ASD) as per the schedule contained in this booklet. They are well equipped with all necessary facilities / genuine parts / oil and trained manpower. All this would ensure better care of your bike.

Your **"Avenger 160 Street BS VI"** has been provided with a warranty of 5 Years or 75,000 Kms. whichever occurs earlier from the date of sale. For details please refer to "Warranty : Scope & Limits" given in this manual.

Should you require any additional information feel free to contact us on helpline numbers or e-mail us at: **customerservice@bajajauto.co.in** or visit the Bajaj Auto website www.bajajauto.com

Thank you for choosing a Avenger and wish you unlimited miles of happy riding !!

**SERVICE DEPARTMENT
BAJAJ AUTO LIMITED**

Table of Contents

AVENGER
160 STREET

Description

1. Technical Specifications	1
2. Identification Data	3
3. Location of Parts	4
4. Steering cum Ignition lock	5
5. Fuel Tank & Instructions for customer	6
6. Speedometer Details	7
7. Speedometer Setting	8
8. Control Switches	9-10
9. Removal & Fitment of Side Covers	11
10. Battery / Tool kit	12
11. Daily Safety Checks	13
12. How to ride your Bike	14
13. Safe Riding Tips	17
14. Engine Oil	18
15. Battery	19
16. Wheels - Tyre	20
17. Periodic Maintenance Information	21
18. Free Service Guidelines	24
20. Periodic Maintenance & Lubrication Chart	26
21. Non Use Maintenance	36
22. Delivery Certificate	37
23. Warranty Scope & Limit	38
23. Battery Warranty Card	

Safety and Warning information :



Warning : This indicates that a potential hazard or injury to you or other persons & to the vehicle can happen if advice provided is not followed.



Caution : This indicates that a potential hazard that could result in vehicle damage. Follow the Advice provided with the caution.

Notice:

The description and illustration in this booklet are not to be taken as binding on the manufacturers. The essential features of the type described and illustrated herein remaining unaltered. Bajaj Auto Limited reserves the right to carry out at any moment without being obliged to bring this booklet upto-date & to do modifications on the vehicle, parts or accessories as may be convenient and necessary.

Technical Specifications

AVENGER
160 STREET

Parameter	Avenger 160	Parameter	Avenger 160
Engine	4 stroke, DTSi	Fuel Tank Capacity	
Bore X Stroke	58 mm x 60.7 mm	Full (No Reserve)	13 Liters
Eng. Displacement	160.37cc	Dimensions	
Compression Ratio	9.8 +/- 0.3 : 1	Length	2210 mm
Idling Speed	1400 +/- 100 RPM	Width	806 mm
Max. Net Power	15 PS at 8500 RPM	Height	1070 mm
Max. Net Torque	13.7 Nm at 7000 RPM	Wheel base	1490 mm
Ignition System	DC	Ground Clearance	169 mm
Spark Plug	Champion RG4HC	Tyre Size	
Spark Plug Gap	0.7 to 0.8 mm.	Front - Tubeless Tyre	90/90 - 17, 49P
Transmission	5 speed constant mesh	Rear - Tubeless Tyre	130/90 -15, 66P
Gear Shifting Pattern	1 Down 4 Up	Tyre Pressure	
Engine Lubrication	Wet sump, forced	Front	1.5Kgf/cm ² (21PSI)
Cooling System	Air cooled	Rear (Solo)	1.75Kgf/cm ² (25PSI)
Starting Aid	Electric Starter	Rear (with Pillion)	1.75Kgf/cm ² (25PSI)
Fuel Injection	BOSCH FI system	Vehicle Kerb Weight	156 kg.
Brakes		Gross Vehicle Weight	306 kg.
Front Brake	Hydraulic disc brake.	Electrical	
Rear Brake	Mechanical expanding shoe.	Electrical System	12 Volts DC
		Battery	12V, 4Ah VRLA
		Head Lamp with DRL	55/60W
		Position Lamp	LED

Technical Specifications

AVENGER
160 STREET

Tail / Stop Lamp	Bulb 5/21W
Turn Signal Lamp	Bulb 10W
Speedometer Illumination	LCD
Bajaj Logo	LED
Fuel Gauge	Analogue
Neutral Indicator	LED
High Beam Indicator	LED
Turn Pilot Indicator	Bulb 1.7W
ABS Indicator	LED
Malfunction Indicator	LED
Side stand Indicator	LCD
Rear Number Plate Lamp	Bulb 5W
Horn	12V DC

Note :

- All dimensions are under UNLADEN condition.
- Above information is subject to change without any notice.
- This vehicle complies to BS IV standards.
- DRL is government regulation.

Single Channel ABS unit for Front brake is fitted on this vehicle.

ABS System Information :

- Always maintain a safe distance between you and objects ahead. Vehicle speeds should always be reduced during extreme road conditions. The braking distance for motorcycle equipped with an anti-lock braking system may be longer than for those without it on rough road conditions. During these conditions the vehicle should be driven at reduced speeds.
- When you apply Front brake under conditions which may lock the wheels, you feel a corresponding sensation (pulsation) in Front brake lever. This is normal and it means your ABS is active.
- Also it is recommended to use both front & rear brakes simultaneously.
- Always slow down when cornering. The anti-lock brake system cannot prevent accidents resulting from excessive speeds.

Identification Data

AVENGER
160 STREET

The Frame and Engine serial numbers are used to register the motorcycle. They are the unique alpha-numeric codes to identify your particular vehicle from others of the same model and type.

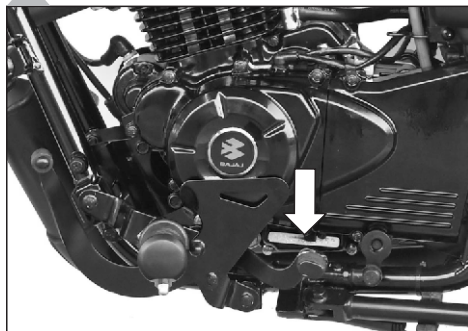


Frame Number Location

On LH Side of Steering Tube
(Alpha-Numeric - 17 Digits)

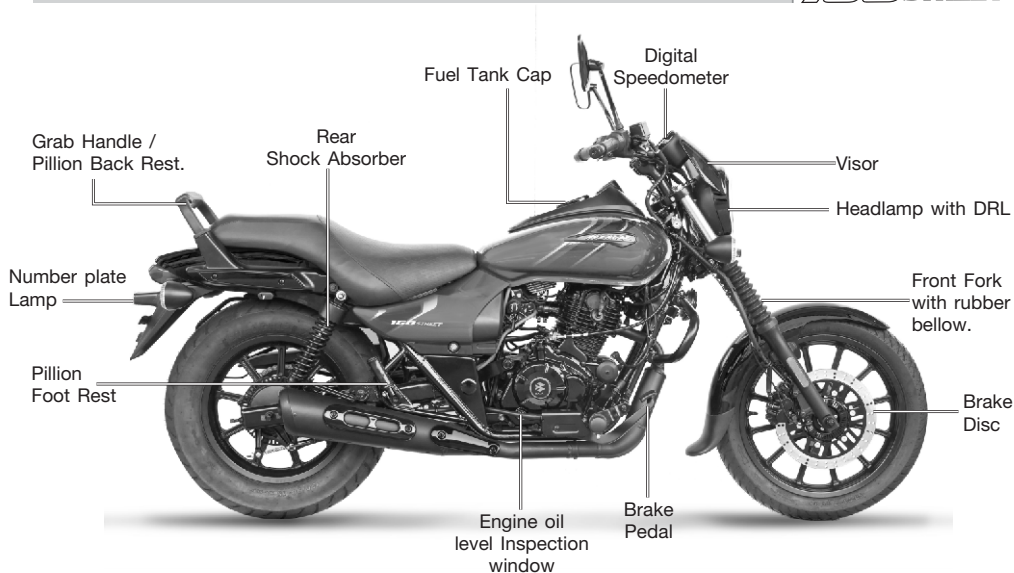
Engine Number Location

On LH Side Crankcase Near Gear
Change Lever (Alpha-Numeric - 11 Digits)



Location of Parts

AVENGER
160 STREET



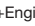


Steering cum Ignition Lock

AVENGER
160 STREET



Ignition Lock : It is located at right side of the frame below 'Fuel Tank'. It has 2 positions. The key can be removed from switch only in 'OFF' position.

Key Position	Function
OFF 	Engine off. All Electrical circuits off
ON  + Engine ON	DRL high intensity and Tail lamp ON
ON  +Engine ON +Light Switch ON	DRL low Intensity, Head lamp ON Tail lamp and number plate ON , Speedometer illumination ON



Steering Lock :

To lock the steering : Turn the handle bar to the left. Slide to open lock cover clockwise. Insert key in lock. Turn the key anti-clockwise and push key in while turning the handle bar slightly to 'Right'. Turn the key clockwise (Original position). Pull the key out.

To unlock the steering : Insert key in lock and turn anti-clockwise. Hold the key in this position & move the handle bar to 'Right' to release the lock. Pull the key out.

Helmet Lock: It is located below seat cowl RH side to lock the helmet strap.

Key : A common key is used for all lock.



Fuel Tank Cap

- To open fuel tank cap, insert key in lock.
- Turn it clockwise and lift fuel tank cap.
- To lock 'Fuel Tank Cap' insert key in lock and press fuel tank cap. 'Click' sound ensures cap is fully locked. Remove key.

Instructions for customer :

- Don't attach metallic 'Key chain' as it may damage paint/plating of petrol tank/tank cover.
- Don't put PVC/Rexin cover on petrol tank.
- In case petrol spills on to tank, clean tank with a clean, dry cloth immediately.

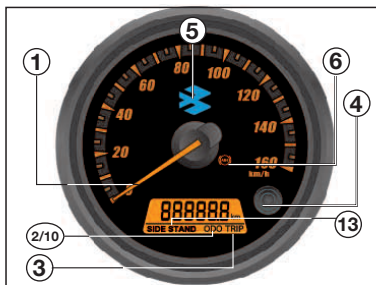
- There is no fuel cock.
- Always maintain min. 3 Liter petrol in fuel tank.
- Do not REV engine in standstill condition.
- Don't use adulterated fuel or fuel additives as it will result in rusting & clogging of Injector, Fuel pump & catalytic convertor.
- If vehicle is tilted beyond 60 Deg, then Roll over sensor cuts off Ignition system as a safety feature.
- Never drive by disconnecting wheel speed sensor as ABS unit will not function.
- Do not keep the cleaning cloth in the vicinity of high temperature zone e.g. Engine, Silencer assembly, Catalytic convertor, Starter motor, etc.
- Cleaning cloth to be kept in side tool kit box along with toolkit.

Side stand down condition is interlocked as given below.

Condition	Result
Vehicle in 'N'	Self start possible but as soon as vehicle is put in gear, engine will get cut off.
Vehicle in Gear	Engine will not start by self.

Speedometer Details

AVENGER
160 STREET

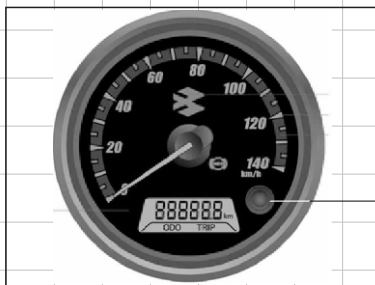


1. **Speedometer:** The speedometer needle shows the speed of the vehicle in Km/Hr.
2. **Odometer:** It shows the total distance that the vehicle has covered.
3. **Trip Meter:** It shows the distance travelled since it was last reset to zero.
4. **Mode Button:** For selecting & resetting 'TRIP'.
5. **Bajaj Logo (Bajaj Logo):** Bajaj logo flying 'B'.
6. **ABS Indicator (ABS):** With Ignition switch ON the ABS indicator glows. When vehicle speed is more than 5 Km/h the ABS indicator goes off, if this indicator glows while vehicle is running, it means there is problem in ABS unit.
7. **Turn Signal Indicator (LH & RH) (LH & RH):** It blinks when Turn signal switch is turned to L/R side.

8. **Neutral Indicator Light (N):** When transmission is in neutral, the neutral indicator will glow.
9. **Fuel level indicator:** It shows approx. available fuel in fuel tank. Red zone indicates reserve.
10. **Low Battery Indicator (Low Battery):** It indicates battery needs charging. It will glow in ODO window.
11. **Hi Beam Indicator Light (H/L):** When the H/L is ON & the hi beam is selected then indicator light will glow.
12. **Malfunction Indicator (MFI):** It glows whenever any abnormality is noticed in functioning of FI related components.
13. **Side stand Indicator:** It glows when side stand is 'down'.

Speedometer Setting

AVENGER
160 STREET



Mode button

After power on speedometer pointer moves from 0 to 140 & returns back to Zero.

Odometer (ODO) :

- 6 digits with 'ODO' & 'km' icons.
- After 9,99,999 Km, the odometer display rolls over to 0 and continue updating.

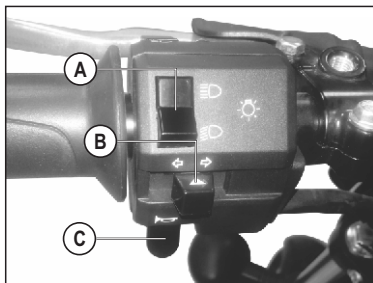
Trip Meter (TRIP):

- 4 digits with a decimal point after third digit & 'TRIP' icon.
- Rolls over to zero after 999.9 Km & continue updating.

Trip Meter Reset :

- Mode button is provided for selecting & resetting 'TRIP'.

1.	Press mode button for less than 2 sec.	Mode changes from ODO - TRIP - ODO
2.	Press mode button for more than 5 sec.	TRIP meter reading will reset to zero. ODO meter reading can not be resetted.

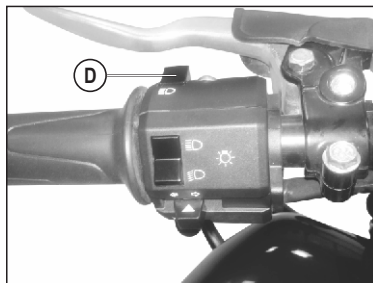


A. High / Low Beam Switch : When headlight is ON, High or Low beam can be selected with this switch.

☰ : High Beam ☉ : Low beam

B. Turn Signal Switch : When the turn signal switch is turned to Left (☞) or Right (☛) the corresponding turn signals flash on and off. To stop blinking push the switch in & release.

C. Horn Button : Press for sound horn.

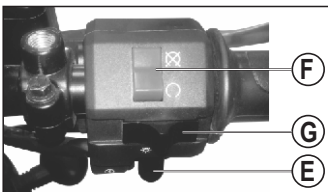


D. Pass Switch : Press the switch to flash the head light. It is used to give signal to vehicles coming from opposite side while overtaking.

High / Low beam Switch	Headlamp Status	Effect of Pass Switch
Low beam ☉	Low beam 'ON'	Hi beam 'ON'
Hi beam ☰	Hi beam 'ON'	No change
Any	OFF	Hi beam 'ON'

Control Switch - RH

AVENGER
160 STREET



E. Starter Button : It operates the electric starter. It is recommended to start the engine with the transmission in neutral.

Vehicle in Gear - Press clutch lever & operate starter button to start the engine.

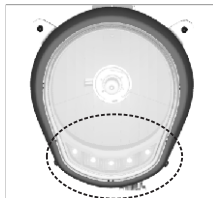
F. Engine Kill Switch : It is used for switching ON (⊖) & OFF (⊗) engine.

G. Light Switch : It has 2 positions. When ignition switch is 'ON', lighting system will work as per given table.

Switch Position	Function
Ignition ON + Engine ON+Light Switch OFF ●	DRL high intensity and Tail lamp ON
Ignition ON+ Engine ON+Light Switch ON ☀	DRL low Intensity, Head lamp ON Tail lamp and number plate ON , Speedometer illumination ON

Day Time Running Light :

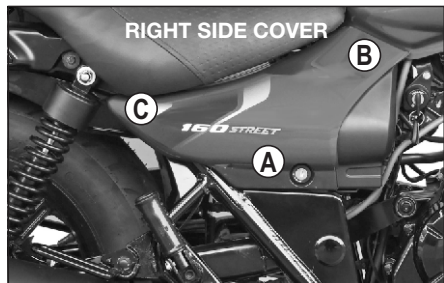
- Day Time Running light is provided inside headlamp.
- Day Time running light gets 'ON' (High intensity) when ignition switch turned to 'ON' position.
- After headlight is turned to 'ON' position, intensity of DRL LED's will get reduced.



Note: The inside of the lamp lens might fog up after using the motorcycle in rain or after washing. Fog inside the lamp lens will disappear gradually by switching on the lamp while driving the motorcycle. The amount of time it takes for the fog to disperse depends on the humidity of the ambient air. Fog in non functional areas other than reflector does not affect the lamp performance.


Removal & Fitment of Side Cover

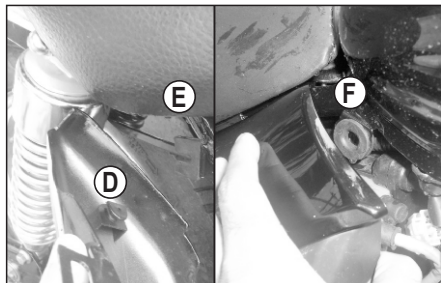
AVENGER
160 STREET



Removal of Side Cover RH


- Insert the key into the cover lock (A) and turn the key clockwise.
- Pull front side (B) first
- Slide side cover toward rear (C).
- Take out 'Side cover'.

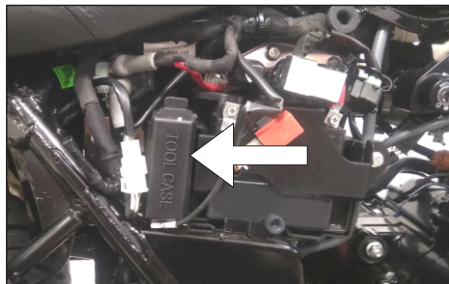
 **CAUTION :** Remove cover as described above, Otherwise the lugs may break.



Fitment of Side Cover RH


- Match 'Side Cover' rear bullet (D) with bracket (E) located on chassis & slide toward front.
- Match 'Side Cover' front bullet with slot (F) & press side cover by other hand for positive engagement of bullet of side panel with tank slot.
- Match 'Side Cover' lock properly.
- Insert the key into the cover lock (A) and turn the key anti-clockwise.

 **CAUTION :** Ensure tool kit is inserted properly into compartment



Battery

- It is located inside the 'Side Cover' RH.
- Always keep a watch on battery charge level indicating icon, if it flashes (indicates battery is in low charged condition), show the vehicle to authorised BAL dealer.


 **CAUTION** : Remove cover as described above, Otherwise the lugs may break.

Tool Kit Location

- Tool kit is located in tool kit compartment.
- Lid is provided inside RH side cover.

First Aid Kit Location

- First aid kit is to be stored along with tool kit in the slot provided near battery.

 **CAUTION** : Ensure tool kit is inserted properly into compartment.

Daily Safety Checks

AVENGER
160 STREET

Before riding motorcycle be sure to check following items. Please give proper importance to these checks and perform all of them before riding motorcycle.

If any irregularities are found during these checks, refer to the Maintenance chapter & see your dealer for the action required to return the motorcycle to a safe operating condition.



Warning : Failure to perform these checks every day before you ride may result in serious damage or severe accident.

- Enough **fuel level** for planned distance of journey. No fuel leakage in fuel lines.
- **Engine oil** level (between upper and lower level mark)
- **Throttle cable** play of 2 ~ 3 mm. Smooth operation and positive return to closed position,
- **Brake Pedal** Play - 20 to 30 mm.
- **Wear lining Indicator** within usable range. No brake dragging.
- **Brake Fluid** level above MIN mark provided on reservoir.
- **Drive Chain** slack of 25 to 35 mm adequately lubricated.
- Function of all **lights & horn**
- **Clutch lever** play - 2 to 3 mm
- Smooth **steering movement** without restriction.
- Both **stand** return to their fully up position.
- Correct **inflation pressure** in both tyres
Adequate tyre tread depth - no cracks / cuts.
- Correct **rear viewing** span adjustment of mirror.

How to Ride Your Bike

AVENGER
160 STREET

Starting The Engine :

- Turn ignition / kill switch to ON position.
- Confirm that transmission is in neutral.
- **Keep throttle completely closed**, press starter button "⚡".

Note : Do not let the engine idle longer than 3 minutes otherwise it will overheat.

"Cranking ON and OFF duration" control –

Cranking ON-OFF duration control feature to avoid battery discharge-

- 1st Crank ON (5 sec) & Disable for 2 sec.
- 2nd Crank ON (5 sec) & Disable for 2 sec.
- 3rd Crank ON (5 sec) & Disable for 10 sec. After a gap of 10 sec cranking cycle continues.

Note : The motorcycle is equipped with a clutch switch. This switch ensures that the engine can be started in any gear if the clutch lever is pressed.

Incase of battery discharged condition, please bring vehicle to dealership.

Moving Off :

- Check that Center/Side stand is up.
- Depress clutch lever, Shift into 1st gear.

- Open the throttle and release the clutch lever slowly and simultaneously.
- As the clutch starts to engage, open the throttle a little more, giving engine just enough rpm to keep running.

Shifting Gears :

- Close throttle & depress the clutch.
- Shift into next higher or lower gear.
- Open the throttle and release the clutch lever slowly and simultaneously.

Recommended Speed for Shifting Down

From 5 th to 4 th	50 km/h
From 4 th to 3 rd	40 km/h
From 3 rd to 2 nd	30 km/h
From 2 nd to 1 st	18 km/h



Gear Shifting Pattern



Warning : When shifting down to lower gear, do not shift at such high speed that engine rpm jumps excessively. This may cause engine damage, & rear wheel may skid. Downshifting should be done at recommended speeds as shown in table.

Braking :

- Close the throttle completely, leaving the clutch engaged (except where shifting gears) so that the engine braking will help slow down the motorcycle.
- Shift down one gear at a time so that you are in Neutral when you come to a complete stop.
- When stopping, always apply both brakes at the same time. De-clutch as necessary to avoid engine stalling.
- Never lock the brakes, or it will cause the tyres to skid. When cornering, use brakes judiciously & do not de-clutch. Reduce your speed before you get into the corner. For emergency braking, disregard downshifting, and concentrate on applying brakes as hard as possible without skidding.

Stopping the Vehicle :

- Close the throttle completely.
- Shift the transmission into neutral.
- Bring the vehicle to complete stop.
- Turn the ignition switch off.

Parking the Vehicle :

- Support the motorcycle on a firm level surface with the center or side stand.
- Lock the steering.



CAUTION : Do not park on a soft or steeply inclined surface or the motorcycle may fall over.

Running IN

Proper running-in is important for the better life & trouble free performance of the vehicle.

- During first 2000 kms running-in period do not exceed following speed limits.

Kms	1st	2nd	3rd	4th	5th
0 - 1000	10	20	30	35	45
1000 - 2000	15	30	40	45	55

- Always keep the speed below the limits mentioned in the table.
- Do not race the engine excessively.
- Do not start moving or race the engine immediately after starting. Run the engine for a minute at idle speed to give the oil a chance to workup into the engine.

Fuel Saving Tips :

A well maintained vehicle and good driving can contribute a lot to the saving of petrol. Following are a few simple fuel saving tips.

- Ride smoothly and steadily at an optimum driving speed to get best mileage.
- Avoid harsh braking.
- Change the gear judiciously according to the speed and load requirement.
- Don't overload the vehicle above the specified payload.
- Use the accelerator judiciously.
- Cut off the engine if you want to stop for more than two minutes.

How to check mileage (Fuel efficiency)

Best way to calculate mileage is by following the full tank to full tank method.

- Fill way tank full up to small mouth (brim).
- Run the bike for say 100 km.
- Fill the tank full again in same fuel filling station, probably with same fuel dispenser.
- Divide kilometer run / fuel quantity filled.

Ensure following maintenance points to get optimum performance from your bike.

Fuel	Check fuel lines & connections for leakage.
Spark Plugs	Inspect and clean spark plugs. Adjust electrode gap. Replace spark plugs as per P.M. Chart.
Air Filter	Clean the air filter element periodically. Replace as per Periodic Maintenance Chart.
Engine Oil	Check engine oil level. Always use recommended grade and quantity.
Brakes	Ensure that the brakes are not dragging / binding.
Clutch	Ensure correct clutch lever play.
Tyre Air Pressure	Always maintain recommended tyre pressure.
Brake Fluid	Always maintain brake fluid level above minimum mark

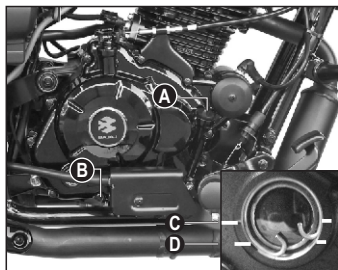
Safe Riding Tips

AVENGER
160 STREET

- Always wear Helmet while driving or riding. Your helmet should conform to Indian standards.
- Read thoroughly the instructions given in this manual and follow them carefully.
- Avoid unnecessary accessories for the safety of both rider and other motorists.
- Get familiar and follow traffic rules & regulations in your states as well as general traffic signs.
- Familiarise yourself well with starting, acceleration and braking of the vehicle.
- When applying the brakes, use both front & rear brakes simultaneously. Applying only one brake may cause the vehicle to lose control.
- Riding at proper speed, avoiding unnecessary acceleration and braking are important safety, fuel consumption and longer life of the vehicle.
- During monsoon, drive vehicle more cautiously. Remember vehicle skid more easily during light showers.
- Keep both hands firmly on handle bar & both feet securely on rider footrest. Do not take away both hands & / or feet from resting area as this is very unsafe.
- Do not use mobile phones while riding as it could lead to fatal accident.
- It is suggested to customer to take appropriate care in area of heavy monsoon or high rainfall area. The appropriate surface preventive coat to avoid rusting / poor surface finish on account of adverse atmospheric conditions.
- Always carry vehicle registration & insurance papers, and a valid driving licence with you.

General Maintenance Tips :

- Vehicle cleaning to be done with soft & clean wet cloth to avoid scratches on painted parts.
- Clean & lubricate all the important parts as detailed in a periodic maintenance chart.
- Do not apply direct water jet on painted, electrical / electronic parts.
- Do not obstruct engine cooling by adding mud protection sheet from front
- Drive cautiously. Start early & reach your destination safely.
- Avoid driving on loose sand or stones where vehicle is likely to skid.
- Properly wrap-up loose clothes while driving or riding to avoid entangling in wheel or other objects on road.
- Always concentrate on riding for safety.



**A : Oil
filler
cap**

**B : Oil
level
gauge**

Engine Oil Level Checking :

- Check engine oil level every day. Park vehicle on level surface.
- Check oil level through oil level gauge 'B'.
- Always maintain engine oil level between upper (C) and lower (D) mark provided on Cover RH. Top up with specified grade of oil if the oil level is below lower level mark.
- Completely tighten oil filler cap after oil filling is over.

Engine Oil Capacity :

- Refill at servicing : 1000 ml.
- During engine overhaul : 1100 ml.

Recommended Engine Oil:

Always insist on Bajaj Genuine Engine Oil for optimum engine performance and warranty benefits. It is a specially formulated oil for vehicles with DTS-i engines.



Model	Recommended Engine oil	Grade
Avenger 160 Street	Bajaj DTS-i 10000 BS6 Compliant	SAE 20W50 JASO 'MA2' API SN

- Engine oil replacement frequency : 1st service & then every 10,000 Km.
- Engine oil level top-up frequency : Every 5000 km.
- For all BS VI Vehicles, above BS VI compliant engine oil is to be used only. Use of BS 6 engine oil will give prolonged life of catalytic convertor.



CAUTION :

- It is most important to adhere to recommended grade & frequency of oil change for the purpose of long life of critical engine components. For details refer periodic maintenance chart.
- Do not reuse drained oil.



Battery : 12V - 4 Ah VRLA

- Battery is located inside Side Cover RH.

Battery Features :

- No topping-up is required
- Reduced self discharge, Enhance safety.
- No vent tube open to atmosphere hence no discharge of electrolyte through vent tube.
- Battery make may differ from vehicle to vehicle.



CAUTION : Do not drive / run vehicle in battery disconnected condition. It may lead to damage of electrical / electronic components.

- Environment care must be taken to dispose off the used battery.

- It is always recommended to hand over the same to the Authorised battery / Bajaj dealer for proper disposal of the same.
- When low battery icon pop-up, it is advised to reach Bajaj dealer & get it charged immediately.
- Warranty on battery is 18 months from the date of purchase of vehicle.

How to keep battery healthy ?

- Switch 'Off' ignition when engine is not running.
- Get battery checked/ charged during periodic services.
- **Do not add extra electrical accessories such as - Remote, Bigger Horn, Musical brake light etc. This will reduce life of battery**
- Disconnect battery +ve & -ve wires if vehicle is to be stored for more than 2 weeks. This avoids self discharge.



Tubeless Tyre :

The main advantage of tubeless tyres is in case of puncture the rate of air leak is very slow, hence customer can easily drive the vehicle upto nearest puncture repair shop for removing puncture.



CAUTION : The walls of the tyres in contact with the wheel rim seals air & should not be damaged in any way during fitment / removal of tyre.

Wheel Puncture:

- Visit nearest known tubeless tyre repair shop to remove puncture.
- Remove puncture by Filler or Plug method
- Do not use patch method to remove puncture.

Tyre Pressure :

Keep appropriate tyre pressure to increase life of the tyre & for better fuel consumption.

Avenger 160	Front	1.5Kgf/cm ² (21PSI)
	Rear (Solo)	1.75Kgf/cm ² (25PSI)
	Rear (with Pillion)	1.75Kgf/cm ² (25PSI)

Note : Incase the motorcycle is fitted with imported tyres. compliance to respective indian standard & central motor vehicle rules has been ensured.

- Tyre warranty is settled by tyre manufacturer.
- Decision is taken based on tyre wear and running of vehicle.
- BAL settles tyre warranty only for imported tyres.



Front Brake Fluid Level

- Front brake fluid master cylinder reservoir is located near RH switch on handle bar.
- To check oil level, keep the vehicle on Centre stand with handle bar in straight position.
- Always ensure that brake fluid level is above 'MIN' mark given on inspection window.
- Use only DOT 4 brake fluid (from sealed container) to top up if required.
- Change the brake fluid as per periodic maintenance schedule.

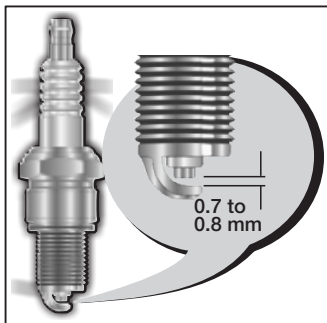
Matte finish painted parts cleaning

Do's :

- Use Colin or dish washing detergent solution for cleaning. (1 spoon in ½ bucket)
Remove foreign substances like insect remains, road debris using a soft brush.
- Use microfiber cleaning cloths Ex.- Muslin cloth for painted parts cleaning.

Don'ts :

- Do not use wax/spray/products made for normal glossy paint for cleaning.
- Do not use products that are even mildly abrasive, such as polishes, glazes, or rubbing compounds.
- Do not use mechanical cleaners/polishers.
- Do not use terrycloth or paper towels or shine enhancement products.
- Do not rub the finish vigorously, this will burnish the paint finish, causing a permanent shiny spot. Shiny spots cannot be removed.
- No Polishing/Teflon coating on painted parts.



Spark Plug

- Remove spark plugs by using plug spanner.
- Clean the spark plugs.
- Adjust the gaps if incorrect by bending outer electrode carefully.

Spark Plug Gap : 0.7 to 0.8 mm.

Spark Plug (2 Nos.) : Champion RG4HC

Drive Chain Slackness

- Chain slackness will have to be adjusted whenever required.
- Std. Chain slackness 25 ~ 35 mm.
- Marking on chain adjusters should be identically positioned on both sides.



**Drive
Chain
Cleaning**



Drive chain must be cleaned & lubricated as per periodic maintenance schedule.

Sealed Drive Chain

- 'O' rings must always be kept wet for best performance hence lubricate every 500 Km.
- **O-ring chain lubrication can easily be done by owners using Bajaj 'Chain Lube Spray Can' available with Bajaj dealers.**



**Drive
Chain
Lubrication**

Method of Sealed Drive Chain Lubrication :

- Park vehicle perpendicular to the ground on level surface. Clean the chain by using lint free cloth (If excessive mud / slush found approach Bajaj Service Center for proper cleaning)
- Shake the can vigorously by holding vertically upright till the noise of steel ball inside heard uniformly.
- Hold spray can at the back of rear sprocket with extension tube nose at 5~10 cm.
- Rotate the wheel in reverse direction & spray the lube on middle portion of the chain up to full length of the chain.

Free Service Guidelines



Instruction to avail Free Service through Digitized Free Service Coupon

Please follow following procedure :-

- Please provide your mobile number to Dealer at the time of buying of new Bajaj Vehicle.
- In case of change in mobile number, please update to Dealer / ASD.
- When you are at Dealership / ASD workshop for availing Free Service, you will receive the 'Unique Coupon Number' (UCN) through SMS in your mobile.
- Please inform the UCN to Dealer / ASD at the time of Free Service.
(ASD-Authorised Service Dealer)

Periodic Service Criteria			
Service	Days	Kms	whichever occurs earlier
1st Free Service	30~45	500~750	
2nd Free Service	240	4500~5000	
3rd Free Service	360	9500~10000	
Subsequent Paid services	120 Days from last Service	Every 5000 Km after previous service	

Availing all Free / Paid Services, replacing mandatory periodic parts & engine oil will entitle warranty eligibility.

E20 Petrol

AVENGER
160 STREET



E20 :

- This vehicle is compatible for “E20” Petrol i.e. Petrol blended with 20% Ethanol. E20 sticker affixed on fuel tank cap.
- In this vehicle ‘E10’ Petrol (existing) i.e. Petrol blended with 10% Ethanol also can be filled.

Periodic Maintenance & Lubrication Chart

AVENGER
160 STREET

Sr. No.	Activities / Check points	Recommended frequency - Service interval & Kms							
		Servicing	1st (Free)	2nd (Free)	3rd (Free)	4th	5th	6th	7th
		KMS	500 750	4500 5000	9500 10000	14500 15000	19500 20000	24500 25000	29500 30000
1.	Servicing with water wash	✓	✓	✓	✓	✓	✓	✓	✓
2.	Engine oil (Bajaj DTSi 10000 oil)	Top-up,R	R	Top-up	R	Top-up	R	Top-up	R
3.	Oil strainer	CL	CL		CL		CL		CL
4.	Centrifugal oil filter	CL	CL				CL		
5.	Air cleaner element* & air filter cover 'O' ring. Drain tube cleaning.	CL	CL	CL	CL	R	CL	CL	R
6.	Spark plug clean & check gap	CL,A,R			CL,A		CL,A		R
7.	Valve tappet clearance	C,A			C,A		C,A		C,A
8.	Throttle body rubber duct(Sleeve)for hard resulting in loose fitment	C,R				C,R	C, R	C,R	C,R

Periodic Maintenance & Lubrication Chart

AVENGER
160 STREET

Recommended frequency - Service interval & Kms									Remarks
8th	9th	10th	11th	12th	13th	14th	15th	16th	
34500 35000	39500 40000	44500 45000	49500 50000	54500 55000	59500 60000	64500 65000	69500 70000	74500 75000	
✓	✓	✓	✓	✓	✓	✓	✓	✓	Ensure to prevent water entry in Petrol tank, Silencer & electrical parts .Use caustic free solution for washing.
Top-up	R	Top-up	R	Top-up	R	Top-up	R	Top-up	Use BGO 20W50 BS6. Oil level window cleaning at every 10000 kms by petrol spray & nylon brush.
	CL		CL		CL		CL		Oil strainer cleaning at the time of oil change. Replace clutch cover gasket
	CL				CL				Clean body centrifugal filter at 1st free service & at 20,000 Kms.
CL	CL	R	CL	CL	R	CL	CL	R	Replace Air filter element at every 15,000 kms Replace air filter cover O ring along with air filter element.
	CL,A		CL,A		R		CL,A		Replace at every 30000 Kms.
	C, A		C, A		C, A		C, A		
C, R	C, R	C, R	C, R	C, R	C, R	C, R	C, R	C, R	Replace if required.

Periodic Maintenance & Lubrication Chart



Sr. No.	Activities / Check points	Recommended frequency - Service interval & Kms							
		Servicing	1st (Free)	2nd (Free)	3rd (Free)	4th	5th	6th	7th
		KMS	500 750	4500 5000	9500 10000	14500 15000	19500 20000	24500 25000	29500 30000
9.	Engine breather tube for cracks.	C,R			C,R	C,R	C,R	C,R	C,R
10.	EVAP system Hoses- check for cracks	C,R		C,R	C,R	C,R	C,R	C,R	C,R
11.	Engine oil cooler fins	C,R		C,R	C,R	C,R	C,R	C,R	C,R
12.	Engine foundation silent bushes for cracks	C,R			C,R		C,R		C,R
13.	Silencer drain hole cleaning	CL			CL	CL	CL	CL	CL
14.	Wiring harness connections, routine & Conduit / PVC sleeve inspection.	C,A,T	C,A,T	C,A,T	C,A,T	C,A,T	C,A,T	C,A,T	C,A,T
15.	Battery connections & health by load tester. +ve terminal cap fitment.	C,A,L,T	C,A,L, T	C,A,L, T	C,A,L, T	C,A,L, T	C,A,L, T	C,A,L, T	C,A,L, T
16.	Ignition switch contacts cleaning	CL,L			CL,L	CL,L	CL,L	CL,L	CL,L
17.	HT coil connections (Primary and Secondary)	C,T		C,T	C,T	C,T	C,T	C,T	C,T
18.	Starter motor & starter relay connections	C,T		C,T	C,T	C,T	C,T	C,T	C,T

Periodic Maintenance & Lubrication Chart

AVENGER
160 STREET

Recommended frequency - Service interval & Kms									Remarks
8th	9th	10th	11th	12th	13th	14th	15th	16th	
34500 35000	39500 40000	44500 45000	49500 50000	54500 55000	59500 60000	64500 65000	69500 70000	74500 75000	
C,R	C,R	C,R	C,R	C,R	C,R	C,R	C,R	C,R	Replace if required.
C,R	C,R	C,R	C,R	C,R	C,R	C,R	C,R	C,R	Drain EVAP "Y" connection drain tube. Replace if found cut / damaged.
C,R	C,R	C,R	C,R	C,R	C,R	C,R	C,R	C,R	If found damaged, replace it.
	C,R		C,R		C,R		C,R		Replace if required
CL	CL	CL	CL	CL	CL	CL	CL	CL	
C,A,T	C,A,T	C,A,T	C,A,T	C,A,T	C,A,T	C,A,T	C,A,T	C,A,T	Damaged conduit / PVC sleeves protection by applying electrical tape film.
C,A,L, T	C,A,L, T	C,A,L, T	C,A,L, T	C,A,L, T	C,A,L, T	C,A,L, T	C,A,L, T	C,A,L, T	Apply petroleum jelly on battery terminals. Use Midtronics battery tester.
CL,L	CL,L	CL,L	CL,L	CL,L	CL,L	CL,L	CL,L	CL,L	Use recommended WD40 spray
C,T	C,T	C,T	C,T	C,T	C,T	C,T	C,T	C,T	
C,T	C,T	C,T	C,T	C,T	C,T	C,T	C,T	C,T	

Periodic Maintenance & Lubrication Chart



Sr. No.	Activities / Check points	Recommended frequency - Service interval & Kms							
		Servicing	1st (Free)	2nd (Free)	3rd (Free)	4th	5th	6th	7th
		KMS	500 750	4500 5000	9500 10000	14500 15000	19500 20000	24500 25000	29500 30000
19.	Check fault code, Clear fault history, Update latest hex file if applicable	C	C	C	C	C	C	C	C
20.	Sealed Drive chain wear* – Clean, lubricate & adjust. Replace if required	CL,L,A	CL,L,A	CL,L,A	CL,L,A	CL,L,A	CL,L,A	CL,L,A	CL,L,A
21.	Main stand & side stand both pivot pin	C, L					C, L		
22.	Steering play	C,A	C,A	C,A	C,A	C,A	C,A	C,A	C,A
23.	Steering stem bearing & Cap steering bearing (Plastic)*	C,CL,L			C,CL,L		C,CL,L		C,CL,L
24.	Front fork oil & seals	C,R	C,R	C,R	C,R	C,R	C,R	C,R	C,R
25.	Swing arm pivot pin	L		L	L	L	L	L	L
26.	Swing arm NRB for more play	L							
27.	Rear Brake shoes and Front Brake pads for wear limit.	C,R	C,R	C,R	C,R	R	C,R	C,R	R
28.	Rear brake cam	CL,L		CL,L	CL,L	CL,L	CL,L	CL,L	CL,L

Periodic Maintenance & Lubrication Chart



Recommended frequency - Service interval & Kms									Remarks
8th	9th	10th	11th	12th	13th	14th	15th	16th	
34500 35000	39500 40000	44500 45000	49500 50000	54500 55000	59500 60000	64500 65000	69500 70000	74500 75000	
C	C	C	C	C	C	C	C	C	
CL,L	ACL,L	ACL,L	ACL,L	ACL,L	ACL,L	ACL,L	ACL,L	ACL,L	During 1st free service use OKS spray for chain cleaning without removing chain from vehicle. During other services clean chain with Diesel+SAE 90 oil ration of 50:50 & lubricate by SAE 90 oil. (Customer to use OKS chain lub spray at every 500 kms) Use recommended AP grease.
	C, L				C, L				
C,A	C,A	C,A	C,A	C,A	C,A	C,A	C,A	C,A	
	C,CL,L		C,CL,L		C,CL,L		C,CL,L		Replace if required. Use Limaplex grease for lubrication
C,R	C,R	C,R	C,R	C,R	C,R	C,R	C,R	C,R	Replace DOT 4 brake oil and oil seal + Dust seal in pair at every 30000 Kms
L	L	L	L	L	L	L	L	L	Use AP grease. Replace if required.
	L								Lubricate NRB at every 40,000 kms Use AP grease.
C,R	C,R	R	C,R	C,R	R	C,R	C,R	R	Replace at every 15000 Kms
CL,L	CL,L	CL,L	CL,L	CL,L	CL,L	CL,L	CL,L	CL,L	Use AP grease.

Periodic Maintenance & Lubrication Chart



Sr. No.	Activities / Check points	Recommended frequency - Service interval & Kms							
		Servicing	1st (Free)	2nd (Free)	3rd (Free)	4th	5th	6th	7th
		KMS	500 750	4500 5000	9500 10000	14500 15000	19500 20000	24500 25000	29500 30000
29.	1.Check source of leakages if any in the brake system. 2.Check Front & rear brake hose condition. 3.Check Brake fluid level and top up, if needed.	C,A,R	C,A,R	C,A,R	C,A,R	C,A,R	C,A,R	C,A,R	R
30.	Rear sprocket fasteners for looseness.	C,T	C,T		C,T		C,T		C,T
31.	Rear wheel rubber shock dampers for excess play.	C,R			C,R		C,R		C,R
32.	Fairing & windshield well nuts for rubber crack	C,R			C,R	C,R	C,R	C,R	C,R
33.	Clutch, Throttle cable & Rear brake pedal free play adjustment	C,A	C,A	C,A	C,A	C,A	C,A	C,A	C,A
34.	Head light focus adjustment	C,A	C,A	C,A	C,A	C,A	C,A	C,A	C,A
35.	Check & confirm all bulbs / switches working.	C,A	C,A	C,A	C,A	C,A	C,A	C,A	C,A
36.	General lubrication – Clutch lever & kick lever.	L	L	L	L	L	L	L	L

Periodic Maintenance & Lubrication Chart

AVENGER
160 STREET

Recommended frequency - Service interval & Kms									Remarks
8th	9th	10th	11th	12th	13th	14th	15th	16th	
34500 35000	39500 40000	44500 45000	49500 50000	54500 55000	59500 60000	64500 65000	69500 70000	74500 75000	
C,A,R	C,A,R	C,A,R	C,A,R	C,A,R	R	C,A,R	C,A,R	C,A,R	Check & Top up DOT 4 brake oil in every service. Replace brake oil & Master / Caliper seals at every 30000kms
	C,T		C,T		C,T		C,T		Use model wise torque values.
	C,R		C,R		C,R		C,R		Replace rear wheel rubber shock damper if required
C,R	C,R	C,R	C,T	C,R	C,R	C,R	C,R	C,R	Replace if rubber found hard..
C,A	C,A	C,A	C,A	C,A	C,A	C,A	C,A	C,A	Replace cables if operation found hard.
C,A	C,A	C,A	C,A	C,A	C,A	C,A	C,A	C,A	
C,A	C,A	C,A	C,A	C,A	C,A	C,A	C,A	C,A	
L	L	L	L	L	L	L	L	L	Use recommended AP grease.

Periodic Maintenance & Lubrication Chart

AVENGER
160 STREET

Sr. No.	Activities / Check points	Recommended frequency - Service interval & Kms							
		Servicing	1st (Free)	2nd (Free)	3rd (Free)	4th	5th	6th	7th
		KMS	500 750	4500 5000	9500 10000	14500 15000	19500 20000	24500 25000	29500 30000
37.	Tyre air pressure.	C,A	C,A	C,A	C,A	C,A	C,A	C,A	C,A
38.	Mirror position & joint firmness.	C,A	C,A	C,A	C,A	C,A	C,A	C,A	C,A
39.	All fasteners tightness, few are, Front & rear axle, Swing arm axle, Engine foundation, Rider foot rest, Pillion stay	C,T	C,T	C,T	C,T	C,T	C,T	C,T	C,T

* More frequent cleaning may be required while driving in dusty environment.

C : Check, A : Adjust, CL : Clean, R : Replace, T : Tighten, L : Lubricate

Note : Periodic parts, Oil, Filters, All types of greases, Cleaning agents, Cables, Wear & tear parts, Rubber 'O' rings / oil seals / pipes, Gaskets to be replaced as per Periodic Maintenance and Lubrication Chart are mandatory and the same are chargeable to customer.

Periodic Maintenance & Lubrication Chart

AVENGER
160 STREET

Recommended frequency - Service interval & Kms									Remarks
8th	9th	10th	11th	12th	13th	14th	15th	16th	
34500 35000	39500 40000	44500 45000	49500 50000	54500 55000	59500 60000	64500 65000	69500 70000	74500 75000	
C,A	C,A	C,A	C,A	C,A	C,A	C,A	C,A	C,A	Ensure tyre air pressure as per specification.
C,A	C,A	C,A	C,A	C,A	C,A	C,A	C,A	C,A	
C,T	C,T	C,T	C,T	C,T	C,T	C,T	C,T	C,T	Use model wise torque values.

Non-Use Maintenance

AVENGER
160 STREET

Non-use maintenance is necessary if a vehicle remains off road for a longer duration (more than 15 days**). The correct and careful non-use maintenance carried out before storing the vehicle will prevent the vehicle from rusting and from such other non-operational damages like fire hazards.

- Clean the entire vehicle thoroughly.
- Empty the fuel from the fuel tank (if fuel is left in for a longer time, the fuel will break and gummy substance could clog the fuel pump).
- Remove spark plug & put several drops of engine oil into the cylinder. Kick engine over slowly a few times to coat cylinder wall with oil & install back spark plug.
- Set the vehicle on a box or a stand so that both wheels are raised off the ground.
- Spray oil on all unpainted metal surfaces to prevent rusting. Avoid getting oil on rubber parts or brake liners.
- Cover entire vehicle neatly. Make sure that storage area is well ventilated & free from any source of flames or spark.
- Fill 10% excess air pressure in both

wheels.

- Do not apply oil on front brake disc, to prevent rusting. If the front brake disc rusts during storage, do not attempt to clean it with soap water. The rust will go off automatically during first few application of brake.

**** For Battery :**

- a. Remove battery and keep it on wooden plank, in properly ventilated area.
 - b. Before taking the vehicle for use.
- Get the battery recharged from the Authorised Service Center / Battery Dealer.
 - Apply petroleum jelly on battery terminals.

Preparation for regular use after storage :

- Follow daily safety checks.

AVENGER
160 STREET

ENGINE NO. :

		-			-				
--	--	---	--	--	---	--	--	--	--

 Sold on.: _____

Address : _____ Contact No.: _____

1. Owner's Manual	5. Standard Accessories
2. 2 nos of key	6. Battery Make _____ Sr. No. _____
3. Set of tools	7. Tyre Fr Make _____ Sr. No. _____
4. First Aid Kit	Rr Make _____ Sr. No. _____

Dealer Code :
Dealer Name :
Address :
Contact No. :

Important - "Do not detach this page from Owner's Manual"

Warranty : Scope & Limit

AVENGER
160 STREET

Bajaj Auto Limited provides the following warranty in respect of the **“Avenger 160 Street BS VI”** motorcycle manufactured by us.

Every possible care and precaution has been taken to ensure quality in respect of the material & workmanship in the vehicles manufactured by us. Bajaj Auto Limited will repair or replace at their Authorised Workshops, free of charge, part or parts thereof as may be found, on examination, to have manufacturing defect within a period of **5 Years or 75,000 Kms.**, whichever is earlier from the date of sale subject to fulfillment of conditions stipulated in part A, B & C given here under

Note : Warranty is applicable for only first owner of vehicle.

Part A:

Warranty claims in respect of such items like shock absorbers, speedometers etc. though claimed through us, are subject to acceptance of the respective manufacturers. In all such cases the decision of the respective manufacturer will be final and binding.

Proprietary parts like tyres, tubes, battery are warranted by their respective manufacturers and should be claimed on them directly by the customer. Bajaj Auto Limited shall not be Liable to replace them through their dealer, however

Bajaj Dealers will provide full assistance in referring such claims with respective manufacturer.

Bajaj Auto Limited undertake no liability in the matter of consequential loss or damage caused due to the failure of the parts. Delay, if any, at the repairing workshop in carrying out repair to vehicle shall not be a ground for extending the warranty period, nor shall it give any right to the customer for claiming any compensation for damages.

Bajaj Auto Limited reserves the right either to repair or replace the defective parts.

Where a defective part can be replaced by part/s of alternative brand/s, which are normally used by Bajaj Auto Limited in the course of manufacture, Bajaj Auto Limited reserves the right to carry out the replacement by a part or parts of any such alternative brand/s.

This warranty and any claim arising there, is subject to Pune jurisdiction only.

Part B:

No claim for exchange or repair can be considered unless the customer :

- a. Ensures that immediately upon detection of the defect, he approaches any nearest Authorised Bajaj Vehicle Dealers & Recommended Authorised Service Dealers with the concerned vehicle and enables him

Warranty : Scope & Limit

AVENGER
160 STREET

to remove and despatch the part / parts attributing to the manufacturing defect to the Company.

- b. Produces the Owner's Manual, in original, to enable that dealer to verify the details.

It must be expressly understood that claims forwarded directly to us by the owner / customer will not be entertained at all and such defective part/parts thus forwarded by them will lie at our factory at their own risk, and this warranty shall not be enforceable.

To avail benefits of warranty, following are mandatory

1. Availing of Initial 3 Free Services without lapse.
2. Availing paid services at subsequent 5000 kms. or 120 days from last service whichever is earlier without any lapse.
3. Availing of all services at the Authorised Vehicle Dealers & Recommended Authorised Service Dealers.
4. Usage of only recommended engine oil
"Bajaj DTS-i 10000" at specified frequency for drain interval of 10,000 kms. & engine oil level top-up at 5000 kms.
5. Replacing mandatory periodic parts such as air filter, oil filter etc. as per periodic maintenance schedule.

Part C :

Further this warranty is NOT applicable to :

1. Normal maintenance operations like brake & clutch adjustments, cleaning of fuel system, engine tune-up or such other adjustments.
2. Parts subjected to normal wear & tear like Clutch Plates, Brake Shoes, Chain, Sprockets, Fork Oil Seal, Spark Plug, Control Cables, Brake Pads.
3. Replacement of bulbs & rubber components like grommets, 'O' rings, bellows as well as filters, packings, gaskets, fasteners etc.
4. Painted parts. Only blistering or peeling off of paint film are covered under warranty. Any defect arising out due to external damages or due to usage of protective covers /additional protective coatings adverse atmospheric conditions etc. are not allowed like under warranty.
5. All consumables like Engine oil, Fork oil, Brake Oil, Grease etc. are chargeable to customer.
6. Any defect arising due to above consumables not changed as per scheduled or if used other than the recommended one.
7. Never drive your bike through flooded roads or a flooded patch, as damages to the engine parts due to water entry is not covered under warranty.

Warranty : Scope & Limit



8. All chrome plated parts are prone to rust or corrosion in coastal area or in acidic environment or due to neglected cleaning etc. However chrome film peeling is covered under warranty in general atmospheric conditions. Blue/ Yellow colouration of silencer near exhaust port is permissible and hence not covered under warranty.
9. Oxidation of unpainted/painted crankcase, cylinder block, cylinder head etc. in acidic environment or in a coastal area.
10. Parts of the vehicle that have been subjected to misuse, accident, negligent treatment OR which have been used in conjunction with parts & an equipment not manufactured or recommended for use by Bajaj Auto Limited, if found is the sole judgement of Bajaj Auto Limited, such use prematurely affects the performance and reliability of the vehicle.
11. Parts of the vehicle that have been altered and modified or replaced in unauthorized manner like use of wider tyres, loud silencers etc and which in the sole judgement of the Bajaj Auto Limited affects its performance and reliability.
12. **Vehicles which are not being serviced at recommended dealers as per the service schedule described or which have not been operated or maintained in accordance with the instructions maintained in the Owner's Manual.**
13. Vehicles used for any competition or race and/or for attempting to set up any kind of record.
14. Any failure arising due to use of adulterated or bad quality fuel.
Parts affected due to bad fuel quality are not covered Under warranty.
15. If additional electrical accessories such as - Remote, Bigger horn, Musical brake light etc. fitted on vehicle.
16. If the vehicle has been used for commercial purpose like Taxi or any other means of commercial transportation.

Bajaj Auto Limited reserves the right to make any changes in design or to add any improvements on the vehicle at any time without incurring any obligation to install the same on a vehicle previously supplied and sold. Also, the conditions of this warranty are subject to alteration without any notice.

This warranty is the entire written warranty given by Bajaj Auto Limited for **"Avenger 160 Street BS VI"** motorcycle' and no other dealer or its or his agent or employee is authorised to extend or enlarge this warranty.

BATTERY WARRANTY CARD

MAKE OF BATTERY :

MFG. CODE OF BATTERY :

SR.NO.:

TYPE OF BATTERY :

.....

DATE OF SALE :

.....

NAME OF OWNER AND ADDRESS :

.....
.....

TYPE OF VEHICLE :

.....

REG. NO.:

.....

FRAME NO.:

.....

ENGINE NO.:

.....

SERVICE RECORD

Sr. No.	Date	Age Mths.	Voltage	Remarks	Dealer's Stamp & Signature	* Code
1						
2						
3						
4						
5						
6						

* Code For Remarks:

AE : Electrical system needs attention.

IR : Insufficient running of vehicle.

CB : Cover broken.

BC : Broken Container.

PM : Poor maintenance.

BA : Battery abused.

Note : Customer should insist that "Service Record" must be filled by respective authorised battery dealer as proof of specified maintenance for easy settlement of claim, if any.

TO BE FILLED IN BY BATTERY DEALERS / DISTRIBUTORS IN CASE OF CLAIM

Name of Dealer & Code : _____

Date of claim : _____ Battery Type : _____

Serial No. : _____ Date of Fitment : _____

Failure Mode (Please tick as applicable)

- | | |
|---------------------|----------------------------|
| • Loose connection | • Overcharge / Undercharge |
| • Internal Short | • Reverse Charge |
| • Plate Shedding | • Wrong Assembly |
| • Wrong Application | • Terminal Corroded |

Claim Accepted

Claim Rejected

Details of Repair, if any _____

Note:

Please contact nearest respective authorised battery dealer for details immediately after purchase of vehicle.



THE WORLD'S
FAVOURITE
INDIAN

Always Use
Bajaj Genuine
High Performance
Engine Oils

4T
Premium
Engine Oil

BAJAJ
DTS-i
10,000

20W 50



BAJAJ
DTS-i
10,000

20W 50



Top up
bottle

Long Drain Interval of 10,000 kms*



Reduced Friction



Clean Engine Parts,
Longer Engine Life



Smooth Clutch
Control



* Top up recommended at 5,000 kms

We are committed to provide the best of sales & service experience, however should you require any additional assistance, please call our Call centre on the number given below.



: 7219821111

Call charges are as applicable

Call centre timings :- Monday to Sunday
(09 : 00 am - 08 : 00 pm)



Please download customer care app from '**Google play store**' and '**Apple store**' and book the vehicles for servicing and more on your phone.

E-mail : customerservice@bajajauto.co.in

Web Site : www.bajajauto.com

CIN : L65993PN2007PLC130076